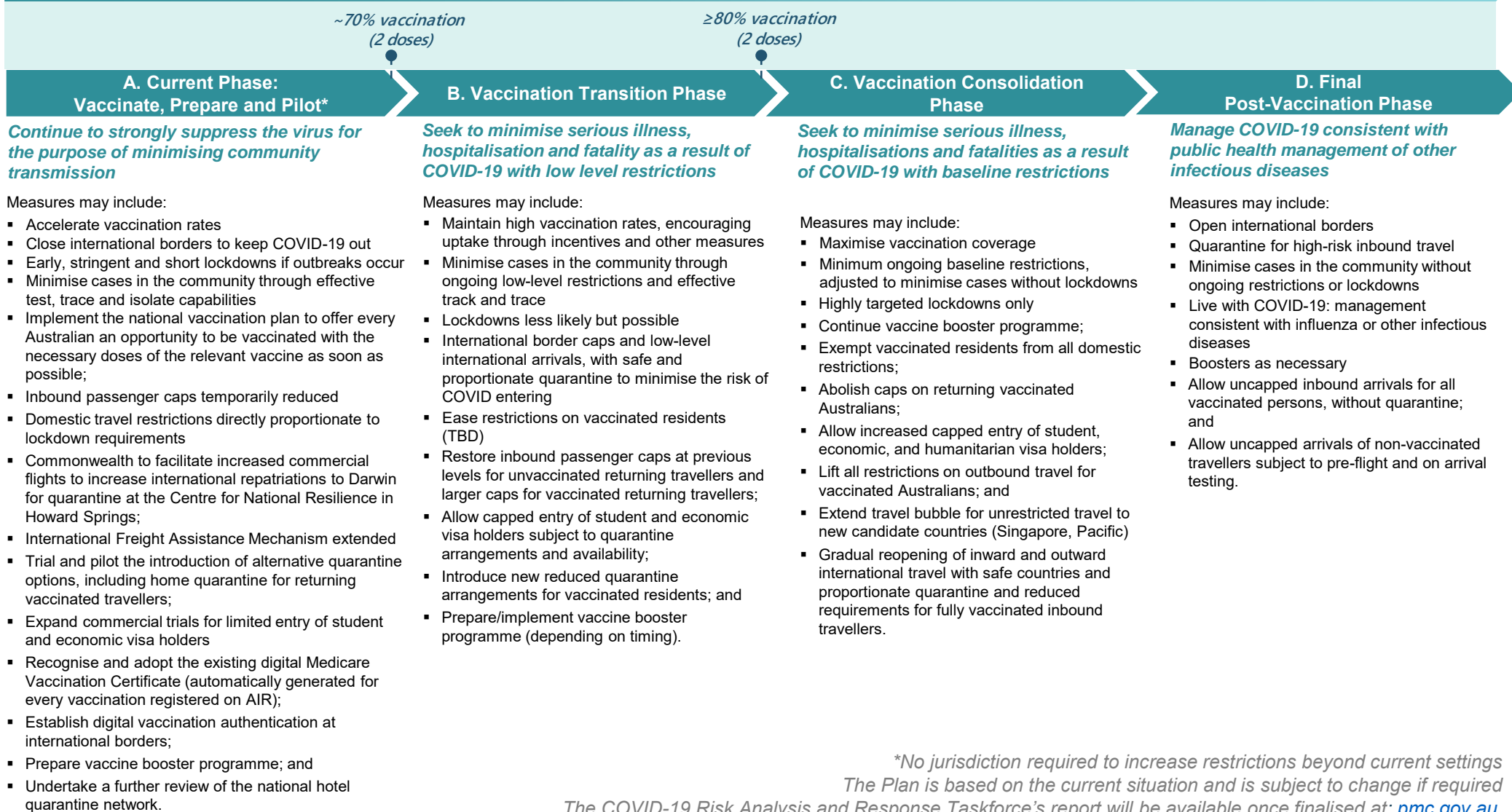




National Plan to transition Australia's National COVID-19 Response

National Cabinet agreed to formulate a national plan to transition Australia's National COVID-19 Response from its current pre vaccination settings, focussing on continued suppression of community transmission, to post vaccination settings focussed on prevention of serious illness, hospitalisation and fatality, and the public health management of other infectious diseases

Phases triggered in a jurisdiction when the average vaccination rates across the nation have reached the threshold and that rate is achieved in a jurisdiction expressed as a percentage of the eligible population (16+), based on the scientific modelling conducted for the COVID-19 Risk Analysis and Response Task Force



**No jurisdiction required to increase restrictions beyond current settings
The Plan is based on the current situation and is subject to change if required*